

# LSEG Trade app – your one-stop solution for market data and trade execution



# Introducing the LSEG Trade app

Benefit from Workspace - your personal ecosystem of research, insights, news and cutting-edge analytics and the award-winning order execution and management capabilities of LSEG, all in a single environment.

## What is the Trade app?

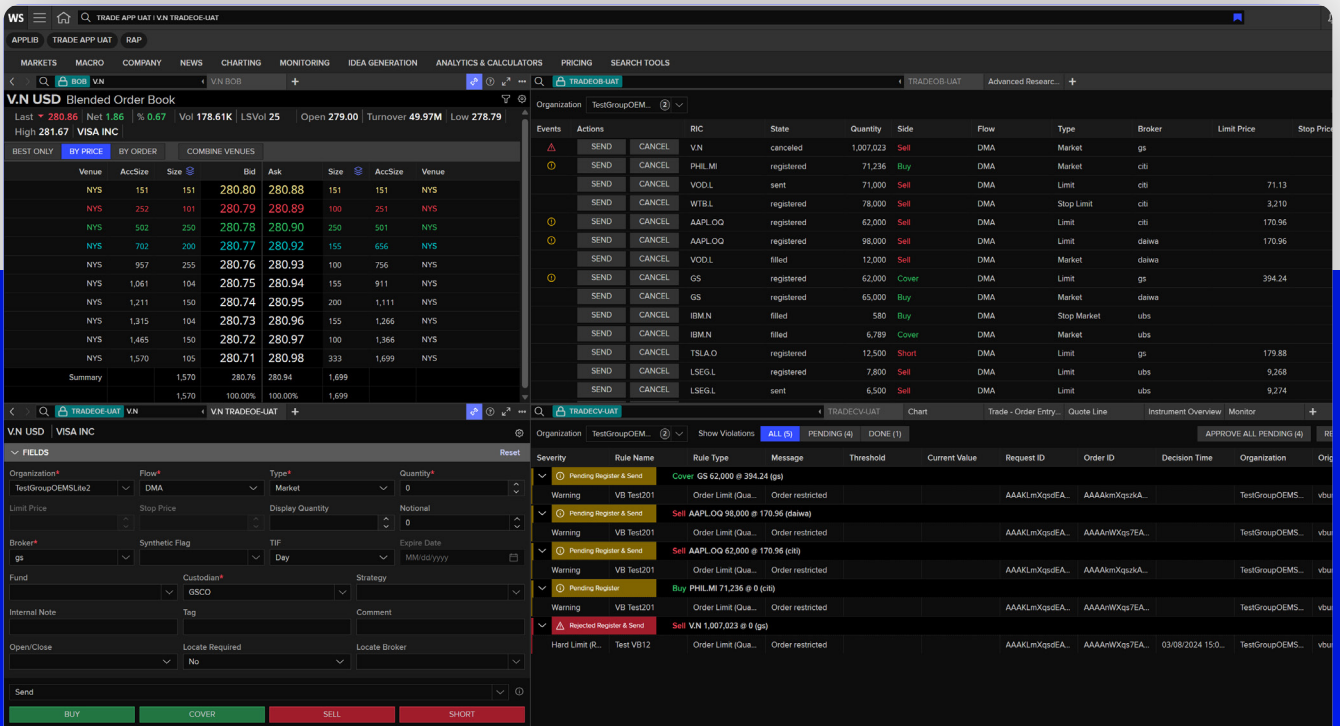
A native execution management application where you can place and monitor your equity and listed derivative orders sent electronically to brokers.

### Provides:

- Order Entry capability enabling you to create and execute orders directly within Workspace
- Compliance tools so you can set order limits, restricted trading lists and more
- Order Blotter within the app enables you to monitor and amend your orders created in the Order Entry
- Seamless linking within your existing Workspace layout

## Why the Trade app?

- Access within Workspace to help you move smoothly from idea generation to execution
- Customisable layout and settings
- A detailed display of information about all orders, including their state, quantity, flow and order type
- Ability to leverage existing connectivity from LSEG Autex Trade Route
- Use compliance rules to specify notifications and limits on orders
- Extensive in-product help available to all users



For more information, please contact your [LSEG account manager](#).

