

# LSEG

# WORKSPACE ADD-INS

## OFFICE INSTALLATION GUIDE

Access to LSEG® data and tools is provided through two separately installed add-ins. These provide additional menu ribbons in certain Office apps of Microsoft® 365, where:

- The core product is the **Workspace** add-in, which has a comprehensive set of capabilities.
- The lighter offering is the **Workspace 365** add-in, which provides basic capabilities but extends across both macOS and web browser environments.

This document describes the pre-requisites and installation of the **Workspace** Office add-in.

## Additional information

For more detailed information regarding:

- Microsoft Office version requirements and browser compatibility, refer to the [Workspace Add-Ins - System Requirements](#).
- Tools supported by each add-in, refer to the [Workspace Add-Ins - Microsoft Office Version Comparison](#).
- Prerequisites, installation, and deployment instructions for the required add-in, refer to:
  - This document for **Workspace** Office information, or
  - the [Workspace Add-Ins - 365 Installation Guide](#).

## Pre-requisites

The following facilities must be installed or configured for tools within the menu ribbon to be made available.

### Installing required Microsoft components

To use the **Workspace** Office add-in, you must install the following Microsoft applications:

- [Microsoft Edge WebView2 Runtime](#)

### Trust Center policy settings

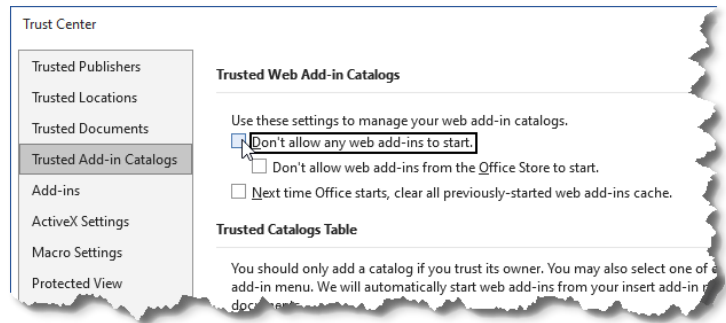
If the Group and/or Microsoft 365 Trust Center policies are set to deny the use of Web add-ins, certain **Workspace** Office add-in menu ribbon items<sup>1</sup> will not load.

---

<sup>1</sup> Items that are not loaded include Deals BI, Linking, Hotkeys, Traces, Auto Color, Define Palette, Comp List, Annotations, and Logos.

To enable the use of Web add-ins, do the following:

1. Open a Microsoft 365 file (Word document, Excel spreadsheet, ...).
2. Open the **File** menu.
3. Select **Options**.
4. In the Options dialog, select **Trust Center**.
5. Click the **Trust Center Settings...** button.
6. Select **Trusted Add-in Catalogs**.
7. Uncheck the **Don't allow any web add-ins to start** checkbox.



## Installing the Microsoft Office add-ins

The **Workspace** Office add-in<sup>2</sup> is installed automatically when you [download](#) and [install](#) LSEG Workspace for desktop.

Make sure that your PC hardware and the operating system meet the required levels. For further information, refer to the [LSEG Workspace System Requirements](#).

## Known issues

### Workspace installations without automatic update

For users installing LSEG Workspace using `--machine-autoupdate=no`, the Excel add-in will not load correctly on non-virtual machines. This is because the default location of the Office registry key is registered at HKLM.

To correct the registry key location, use the command:

```
<install path>/RefinitivWorkspace.exe --update-office-registry=HKCU
```

For more information, see [PCN206237](#).

<sup>2</sup> This add-in only works for Windows users. If you are a Mac user, refer to the [Workspace Add-Ins - 365 Installation Guide](#).