

# Submission File Reconciliations – Quality Assurance

Perform accurate, complete, and timely assurance checks, while enhancing your reporting compliance across multiple jurisdictions, with our global **Submission File Reconciliations (Assurance) solution.**

Rewrites of multiple reporting regulations globally require reporting firms to conduct detailed checks on data provided by the national competent authority (NCA) and/or the trade repository (TR) to ensure a high level of data quality. However, with new standards introducing changes to data formats, this presents a great opportunity to enhance the accuracy, completeness, and timeliness of reconciliations.

## The solution

Our Submission File Reconciliations (Assurance) product provides comprehensive data quality testing across submission files from the NCA/TR. This helps firms meet their regulatory obligations by performing data quality checks across various reporting regimes, including:

- ASIC (Australia)
- Bank of Israel
- CSA
- Canada
- CFTC
- EMIR (EU and UK)
- FinfraG (Switzerland)
- HKMA (Hong Kong)
- MAS (Singapore)
- MiFID II (EU and UK)
- SEC
- SFTR (EU and UK)



The platform provides instant results, allowing you/your firm to receive immediate outcomes with no implementation required.

The compliance rules engine checks 100% of trades from NCA/TR files against 100% of the fields within each regulation. An inbuilt, fully transparent rules library enables demonstrable compliance by referencing the underlying regulatory text.

---

## Key benefits

**01.**

**Performs comprehensive accuracy, completeness and timeliness testing across all trades and fields within your submission files**

**02.**

**Enhances compliance with multiple regulatory reporting regimes globally**

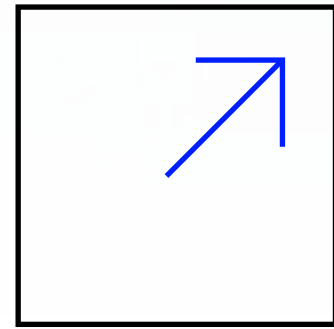
**03.**

**Ensures compliance by testing 100% of transactions, with any errors flagged**

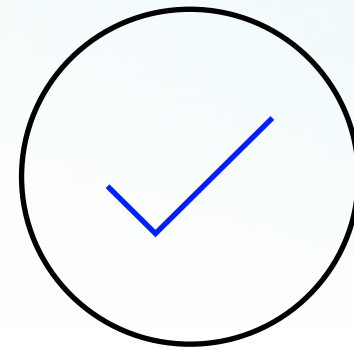
**04.**

**Reduces the need for additional compliance efforts by embedding rules directly into the platform, with ongoing updates**

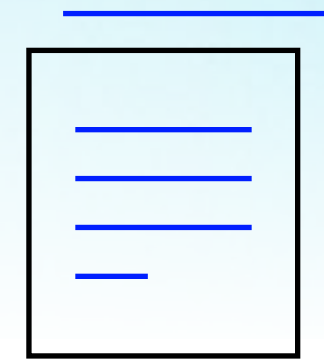
## Features



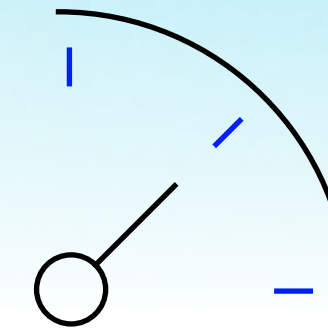
Full EMIR and G20 regime coverage, with modular delivery for easy scalability



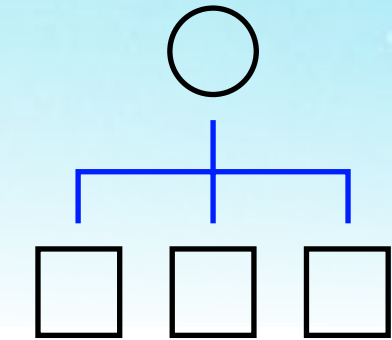
Rapid submission health checks (<24 hours)



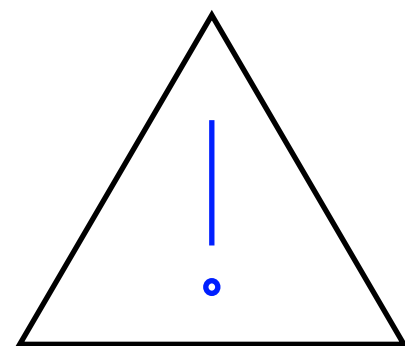
Management information (MI) and reporting capabilities, including bespoke reports for senior governance forums



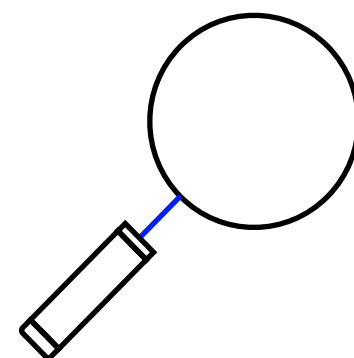
Tailored reporting suite of metrics and KPIs displayed in real time



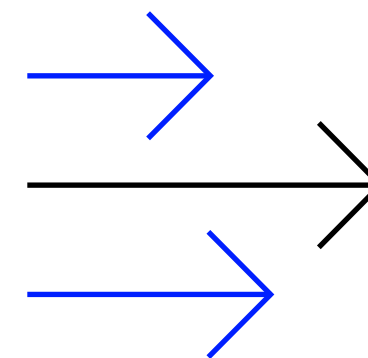
Inbuilt workflow functionality for easy tracking of issues, from identification to closure



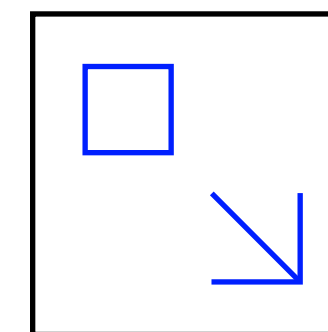
Immediate determination of why errors occurred



Precise identification of errors tied back to regulatory text



Streamlined access within the LSEG environment via single sign-on



No implementation required, with data accepted in its original format from client systems

# Features

**Trade State Completeness:**  
The completeness percentage is determined from the following formula: (Total NCA transactions – overreported transactions) / (Total correctly reported transactions + underreported transactions).

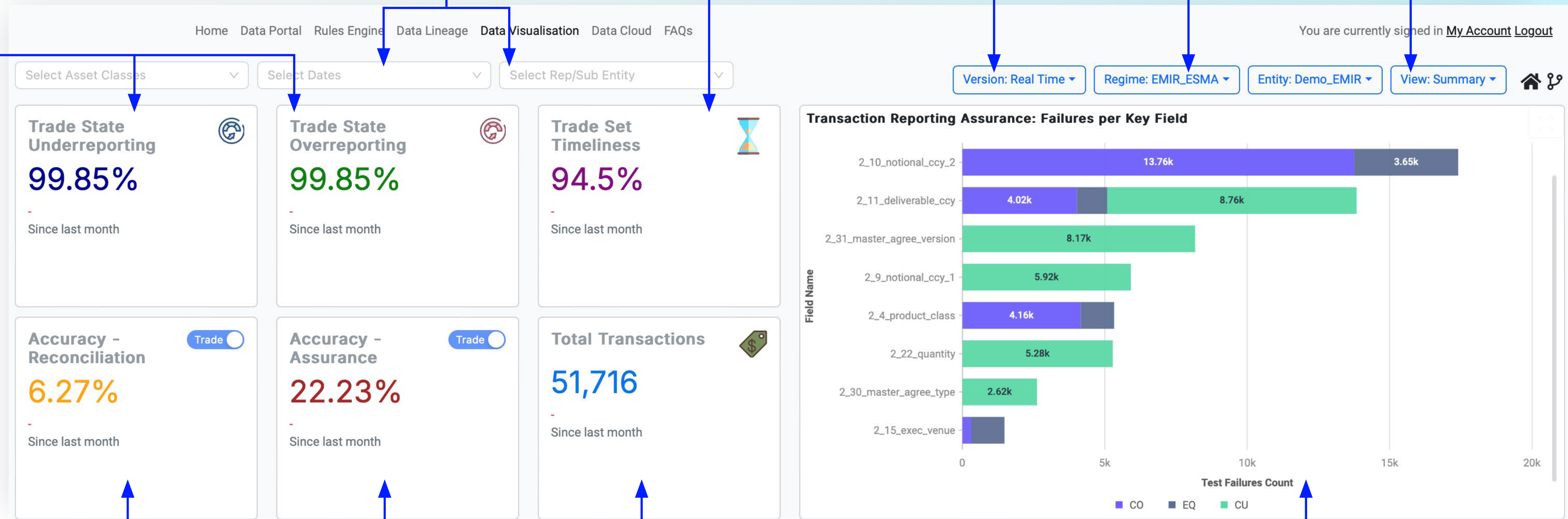
**Filters:** These boxes allow the user to specify the month(s) and asset class(es) to view in the platform.

**Trade Set Timeliness:** The timeliness percentage is determined from the following formula: (Total transactions sent to the FCA within T+1 business day) / (total transactions sent to the FCA).

**Version:** Hover over the version to see which data set is being reviewed.

**Regime:** Each regime a user is subscribed to can be selected here.

**View:** Navigate between different views (Summary, Trending, Assurance etc).



**Accuracy Reconciliation:** is a percentage of trades passed without any comparison exceptions (when the blue "Trade" toggle is on), and percentage of comparison tests passed (when the "Tests" green toggle is on).

**Accuracy Assurance:** is a percentage of trades passed without any assurance exceptions (when the blue "Trade" toggle is on), and percentage of assurance tests passed (when the "Tests" green toggle is on).

**Total Transactions:** A count of transactions at the relevant competent authority.

**Transaction Reporting Assurance: Assurance Accuracy Exceptions per Key Field:** This presents a count of the exceptions per key field. (Hover the mouse over each bar to see a more granular breakdown of the exceptions).

# Features

This view is available across each module: (MiFID, EMIR, CFTC, SFTR, ASIC, MAS).

The screenshot displays a web application interface for regulatory testing. On the left, a sidebar lists various regulatory fields, with '12\_buyer\_dm\_id\_code' selected. The main content area shows three test entries: 'Test: 12\_23', 'Test: 12\_24', and 'Test: 12\_25'. Each entry includes a 'Test Description' and a 'Test Rationale' section. The 'Test Rationale' sections contain detailed regulatory references and links. On the right, a sidebar titled 'Additional Actions' contains several buttons: 'Select Entity: All -', 'Showing Rules for Regime: MiFID II -', 'Return To Introduction Page', 'Rules Management Platform', 'Tag Management', and 'Custom TestID Selection'. Below these is a section for 'Activate Windows' with a 'Download Gallery Data' button.

Multiple tests per regulatory field.

**Test Description:** A summary / overview of the test being run on your data is provided. This information is fully extractable and can be shared with the regulator. The functionality is clear and concise, supported by regulatory text and guidance.

**Test Rationale:** Each test is supported by regulatory text or guidance. This information is fully accessible through the relevant exception within the data visualisation view.

Reference to the exact location of the regulatory requirement or guidance is provided.

# Why choose us?

With years of industry expertise and trusted data accuracy, Regulatory Reporting delivers insights that enhance your operations, so that regulatory data provides new opportunities. Turn reactive into proactive, get ahead of regulations and upskill your teams through access to our services and solutions.

For more information, please contact our sales team or [visit our website](#).



**LSEG** POST  
TRADE

## Contact us

Email [regreportingsales@lseg.com](mailto:regreportingsales@lseg.com)

Phone +44 (0)20 7797 1122

Website [lseg.com/en/post-trade/regulatory-reporting](https://lseg.com/en/post-trade/regulatory-reporting)

## Disclaimer

By making this communication, none of London Stock Exchange plc and/or its group undertakings (which shall be construed in accordance with section 1161 of the Companies Act 2006) (together "LSEG") intend to invite or induce you to engage in any investment activity.

This communication does not constitute an offer to buy or sell, or a solicitation of an offer to sell, any securities, or the solicitation of a proxy, by any person in any jurisdiction in which such an offer or solicitation is not authorised, or in which the person making such an offer or solicitation is not qualified to do so, or to any person to whom it is unlawful to make such an offer or solicitation.

All information in this communication is provided 'as is' and LSEG makes no representations and disclaims, to the extent permitted by law, all express, implied and statutory warranties of any kind in relation to this communication, including warranties as to accuracy, timeliness, completeness, performance or fitness for a particular purpose.

LSEG does not accept any liability for the results of any action taken or omitted to be taken on the basis of the information in this communication. The information in this communication is not offered as advice on any particular matter and must not be treated as a substitute for specific advice. In particular, information in this communication does not constitute legal, tax, regulatory, professional, financial or investment advice. Advice from a suitably qualified professional should always be sought in relation to any particular matter or circumstances.

All and any trademarks and service marks used herein, including but not limited to London Stock Exchange and the London Stock Exchange Group coat of arms device, ('Marks') are trademarks or service marks (whether registered or unregistered) of LSEG, its group undertakings and/or its respective licensors. Marks cannot be used, reproduced or transmitted in any form, either entirely or partially, without LSEG's/owner's express written consent.

LSEG Post Trade Regulatory Reporting is a trading name of LSEG Regulatory Reporting Limited and LSEG Regulatory Reporting B.V.

© 2024 London Stock Exchange Group plc all rights reserved.